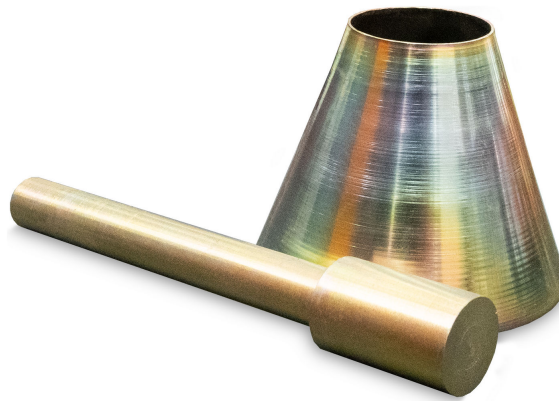


## SAND ABSORPTION CONE and TAMPER

Code : R200



- The relative density (specific gravity), a dimensionless quality, is expressed as oven-dry (OD), saturated-surface-dry (SSD), or as apparent relative density (specific gravity). The OD relative density is determined after drying the aggregate. The SSD relative density and absorption are determined after soaking the aggregate in water for a prescribed duration.

### **TECHNICAL SPECIFICATIONS**

- Cone (Mold):
  - A metal mold in the form of a frustum of a cone with dimensions as follows:  $40 \pm 3$  mm inside diameter at the top,  $90 \pm 3$  mm inside diameter at the bottom, and  $75 \pm 3$  mm in height.
- Tamper:

- A metal tamper having a mass of  $340 \pm 15$  g and having a flat circular tamping face  $25 \pm 3$  mm in diameter.

**ORDERING INFORMATION**

Code	Item
R 200 X00X H	SAND ABSORBTION CONE and TAMPER - ASTM & EN
R 200 X00S H	SAND ABSORBTION CONE and TAMPER - AS
R 200 P001 H	SAND ABSORBTION CONE - ASTM & EN
R 200 P002 H	SAND ABSORBTION TAMPER - ASTM & EN
R 200 P003 H	SAND ABSORBTION CONE - AS
R 200 P004 H	SAND ABSORBTION TAMPER - AS