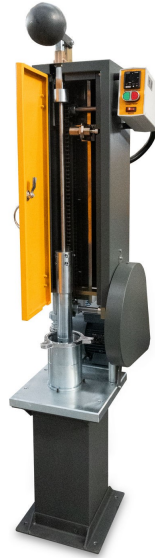


## **MARSHALL COMPACTOR, Automatic**

Code : A015



- Used to determine the resistance of asphalt sample to plastic flow. The test is performed in a fully automatic mechanism and programmed to stop automatically at the required number of blows.
- Supplied with the standard height and rammer weight according to ASTM/EN standards.
- Equipped with a blow counter, wooden pedestal and quick action clamping.

### **STANDARDS**

ASTM D6926 • EN 12697-10 • AASHTO t245

### **TECHNICAL SPECIFICATIONS**

**ASTM Model:**

- Blow Rate: 55 ± 5 blows per minute
- Rammer Diameter: 100.33 mm ± 0.25 mm
- Rammer Weight: 4536 g ± 9 g
- Drop Height: 457.205 mm ± 0.635 mm
- 220 - 240 V / 50 - 60 Hz

**EN Model:**

- Equipped with safety guard
- Wooden pedestal: 200 x 200 x 450 (h) mm
- Concrete base: 450 x 450 x 200 (h) mm
- Blow Rate: 50 blows in 55/60 seconds
- Rammer Weight: 4535 g ± 15 g
- Drop Height: 460 ± 3 mm
- 220 - 240 V / 50 - 60 Hz

**ORDERING INFORMATION**

Item	Code
MARSHALL COMPACTOR, AUTOMATIC, 4" - ASTM	A015M04AT
MARSHALL COMPACTOR, AUTOMATIC, 4" - ASTM [60 Hz]	A015M04AK
NOISE-REDUCTION and SAFETY CABINET for A015M04A	A015P001H
NOISE-REDUCTION and SAFETY CABINET for A015M04E	A015P002H
MARSHALL COMPACTOR, AUTOMATIC - EN	A015M04EU
MARSHALL COMPACTOR, AUTOMATIC, 4" and 6" - ASTM	A015M06AT
MARSHALL COMPACTOR, AUTOMATIC, 4" and 6" - ASTM [60 Hz]	A015M06AK

SPARE HAMMER for A015M - 4"

A015P003H

SPARE CHAIN for A015M - 4"

A015P004H

**OTHER PHOTOS**

