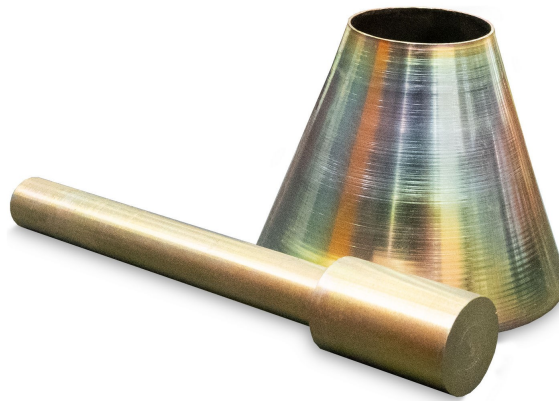


## SAND ABSORPTION CONE and TAMPER

Code : R200



- Designed to determine the specific gravity and water absorption of fine aggregates, crucial for evaluating material suitability in construction projects.
- The set includes a metal mold shaped as a frustum of a cone, facilitating standardized sample preparation for consistent and repeatable testing outcomes.
- Accompanied by a metal tamper, specifically weighted and dimensioned to ensure uniform compaction of aggregate samples during testing procedures.
- Manufactured from corrosion-resistant materials, enhancing durability and longevity in laboratory environments.
- Complies with ASTM and EN standards, ensuring compatibility with internationally recognized testing methodologies.

### **STANDARDS**

ASTM C128 • EN 1097-6 • BS 812-2

## **TECHNICAL SPECIFICATIONS**

- Cone (Mold) Dimensions:
  - Top Inside Diameter:  $40 \pm 3$  mm
  - Bottom Inside Diameter:  $90 \pm 3$  mm
  - Height:  $75 \pm 3$  mm
- Tamper:
  - Mass:  $340 \pm 15$  g
  - Tamping Face Diameter:  $25 \pm 3$  mm

## **ORDERING INFORMATION**

Item	Code
SAND ABSORPTION CONE - ASTM & EN	R200P001H
SAND ABSORPTION TAMPER - ASTM & EN	R200P002H
SAND ABSORPTION CONE - AS	R200P003H
SAND ABSORPTION TAMPER - AS	R200P004H
SAND ABSORPTION CONE and TAMPER - AS	R200X00SH
SAND ABSORPTION CONE and TAMPER - ASTM & EN	R200X00XH